

# Solution Center

Adding a PLC to the workspace



# What is Solution Center

The Solution Center is the main development tool of Bachmann.

You need to install it on your PC with standard settings.

You probably need to activate it, you will receive a minute later an email with a key to copy into the activation field.



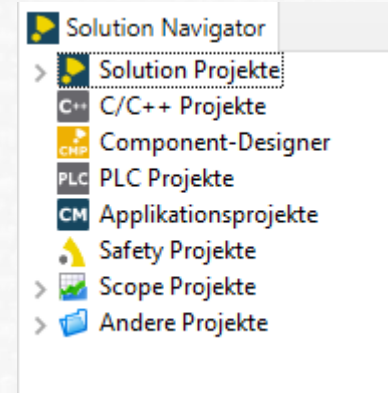
# Opening Solution Center

You will be asked to open or create a workspace.  
That's like your desktop, just keep the standard  
and continue.

You will be welcomed by a Welcome screen.  
Leave it with the top right button



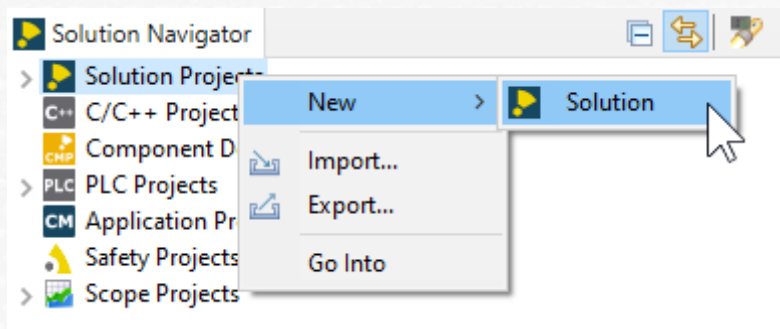
On the top left you find the Solution  
Navigator, here you continue.





# Creating a new Solution

A Solution is the connection to your PLC:

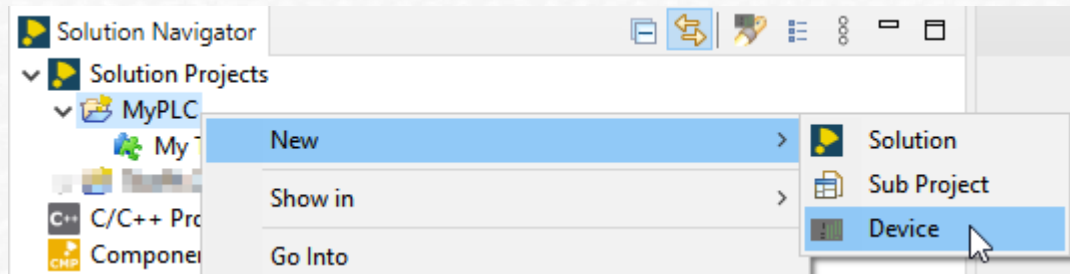


Give it a name, like "MyPLC".



# Creating a new device

Below the Solution you need to create a device:







# Finding a new device

1. You can search with the first option in your network, if you are already online.

The screenshot shows the 'Add Device' dialog box with the following elements:

- Title Bar:** 'Add Device' with standard window controls (minimize, maximize, close).
- Header:** 'Add Device' followed by a folder icon with a magnifying glass.
- Instruction:** 'Choose the option how the device should be added.'
- Search Section:**
  - ☒ **Search one or multiple devices in network**
  - Search:**
    - ☒ Search network (via UDP)
    - ☐ Scan IP address range (via UDP or TLS)
      - from: 10 . 0 . 0 . 0 to: 10 . 0 . 0 . 255
      - Timeout [s]: 3
      - ☐ Search TLS devices
  - Network Adapters: Multiple network adapters selected [Choose ...]
- Add device manually Section:**
  - ☐ **Add device manually**
  - Device:**
    - Name: New Device
    - System: M200 [Ping]
    - Address: 0 . 0 . 0 . 0 : 80 [Blink]
    - Protocol: TCP
    - Timeout [s]: 3
    - File transfer: RFS
    - ☐ Search device by name (DNS)
    - ☐ Reduced Communication
    - ☐ USB Device (RNDIS)
    - ☐ Redundant

- Footer:** A question mark icon, '< Back' button, 'Next >' button (highlighted with a blue border), 'Finish' button, and 'Cancel' button.



# Configuring a new device

1. Otherwise give any name to the Device
2. Enter the IP address
3. Choose TCP (or TLS for PLCs with secured connection)
4. Choose “Reduced Communication” if you are working over the internet.
5. Click “Finish”



# Opening the connection

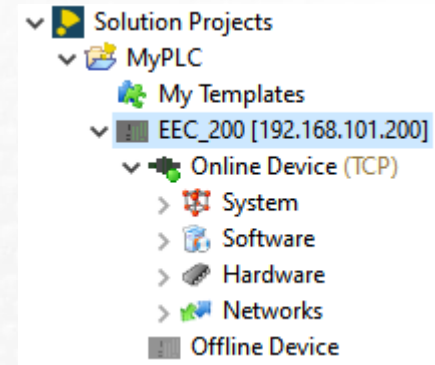
The device is added.

Open the tree view now:

- The Solution
- The Device
- The Online Device

The grey dot will turn into a green dot to show that you are connected and you see sub-branches.

If the PLC is secured, you may need to enter  
User name and password.





# The End



## Thank you for your attention!